

2017 Crop Club Soybean Yield Variety Results



THANK YOU TO OUR PARTNERS AND TO LAND OWNER, ROY FLANNERY



VIRIDEN OIL CAPITALS JR A HOCKEY CLUB

900 5th Ave S, Box 398, Virden, MB R0M 2C0 ☐ Office: (204) 748-4848 ☐ Fax: (204) 748-4849

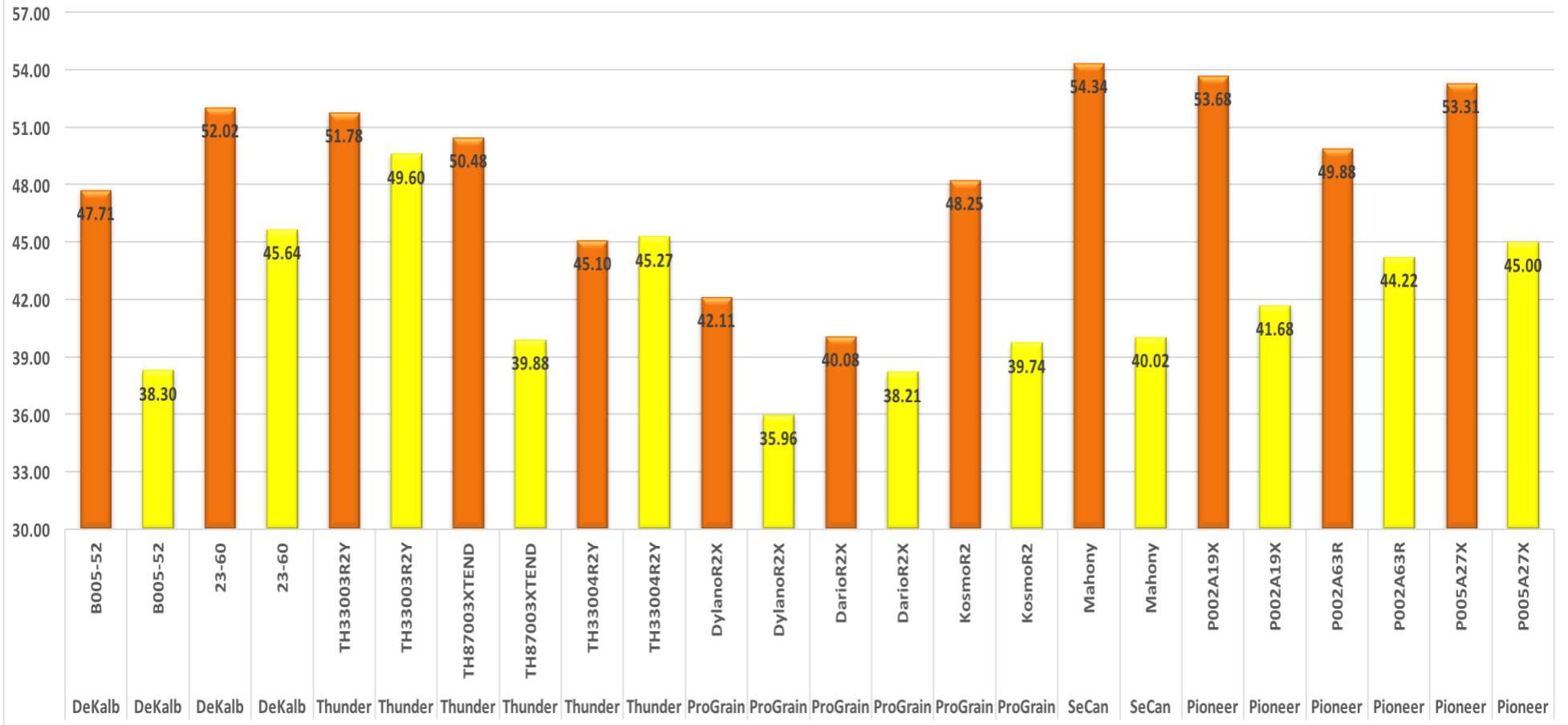
www.oilcapshockey.com

2017 Crop Club Soybean Yield Variety Results

Corn Stubble Average – 49.06 bushels/acre
Canola Stubble Average – 41.96 bushels/acre



Variety Trial # 1 - Corn Stubble (Orange) Canola Stubble (Yellow)



VIRIDEN OIL CAPITALS JR A HOCKEY CLUB

900 5th Ave S, Box 398, Virden, MB R0M 2C0 ☐ Office: (204) 748-4848 ☐ Fax: (204) 748-4849

www.oilcapshockey.com

2017 Crop Club Soybean Yield Variety Results



VIRDEN OIL CAPITALS JR A HOCKEY CLUB

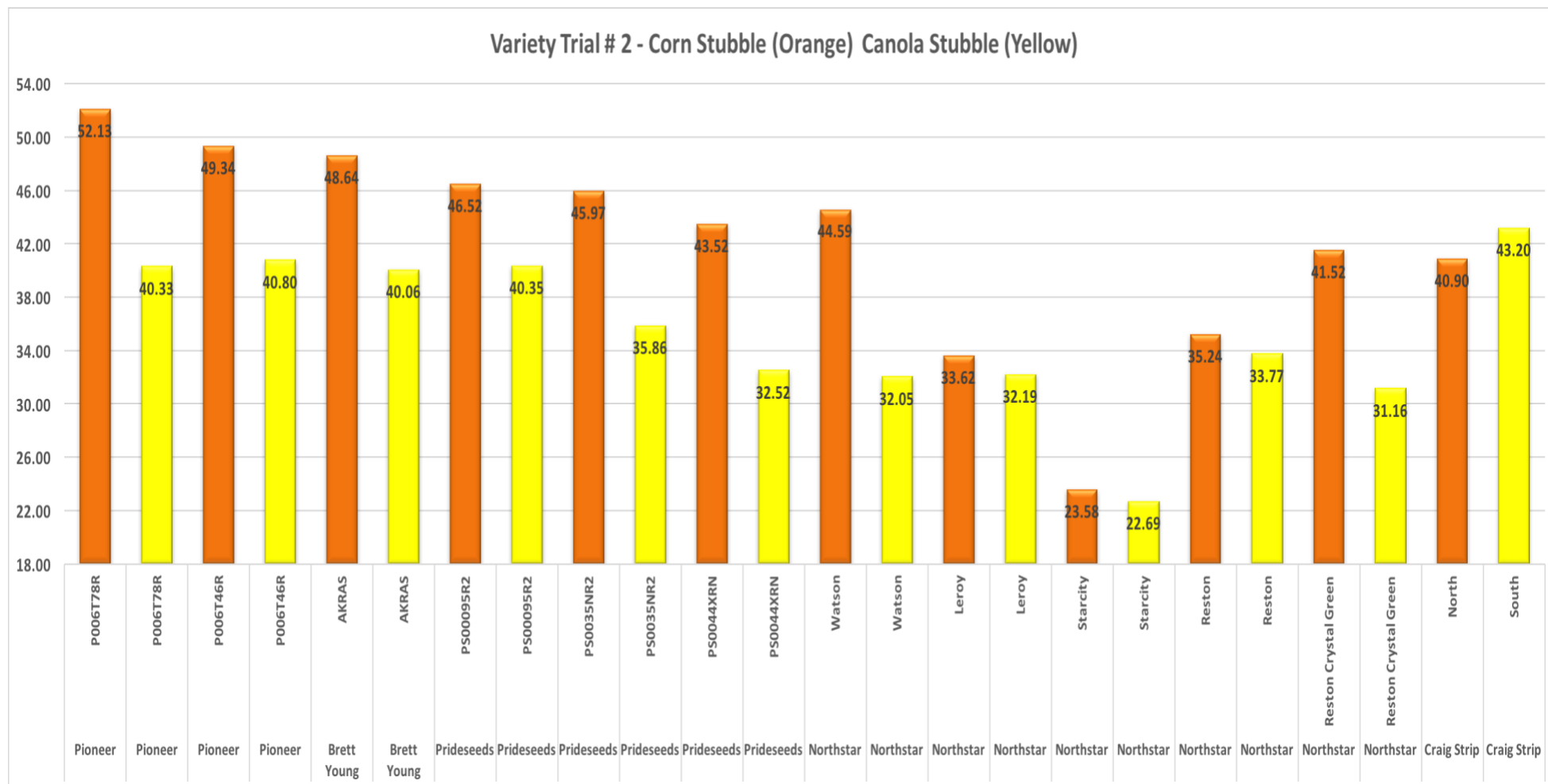
900 5th Ave S, Box 398, Virden, MB R0M 2C0 ☐ Office: (204) 748-4848 ☐ Fax: (204) 748-4849

www.oilcapshockey.com

2017 Crop Club Soybean Yield Variety Results



Corn Stubble Average – 42.13 bushels/acre
Canola Stubble Average – 35.41 bushels/acre

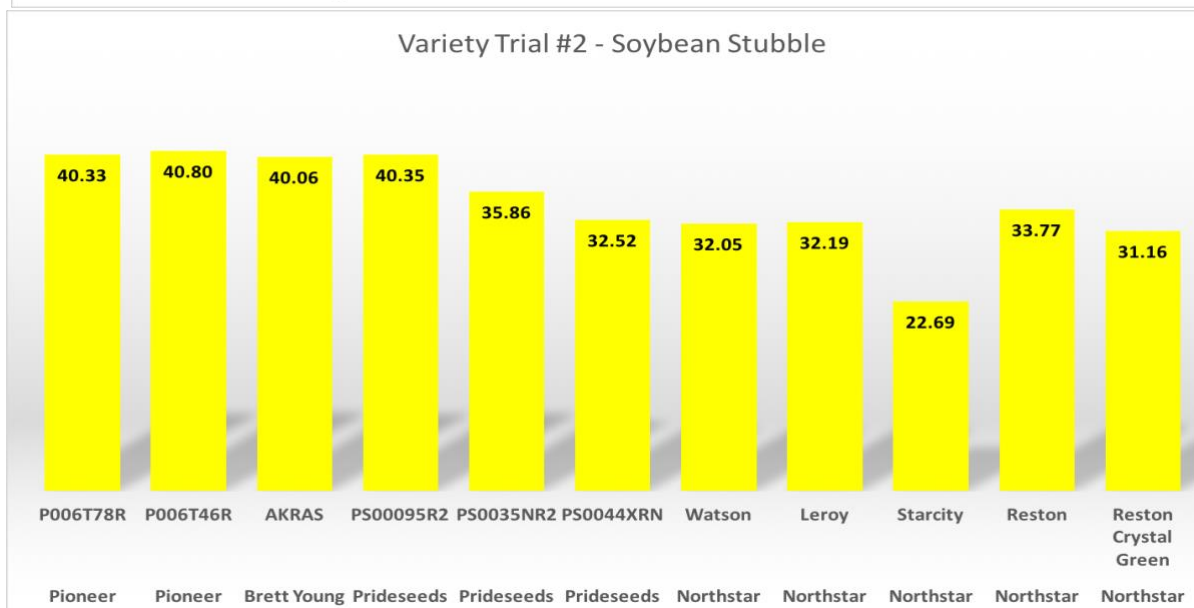
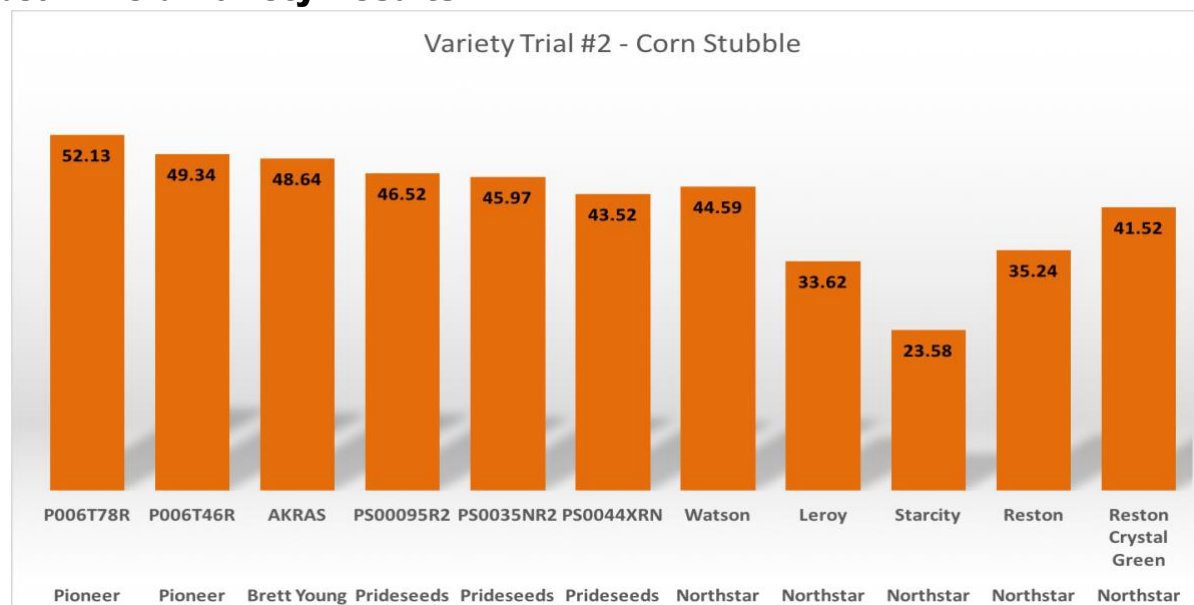


VIRDEN OIL CAPITALS JR A HOCKEY CLUB

900 5th Ave S, Box 398, Virden, MB R0M 2C0 ☐ Office: (204) 748-4848 ☐ Fax: (204) 748-4849

www.oilcapshockey.com

2017 Crop Club Soybean Yield Variety Results



VIRDEN OIL CAPITALS JR A HOCKEY CLUB

900 5th Ave S, Box 398, Virden, MB R0M 2C0 ☐ Office: (204) 748-4848 ☐ Fax: (204) 748-4849

www.oilcapshockey.com

2017 Crop Club Soybean Yield Variety Results



Fertility Program – Oil Caps Field

- Sulfur was applied at a high rate of Tiger 90CR in 2015 at 90 lbs/actual/acre. This three-year program covered the needs of soybeans, canola/corn and then soybeans again in 2017. Sulfur will need to be applied again for the 2018 season
- Where plots have been placed over the past three years have been in zone 5/6 in a better production area.
- Zones were treated the same in 2015
 - o **48 lbs P**
 - o **35 lbs K**
- Zones were split in 2016 between canola and corn
 - o Corn
 - **87 lbs of P**
 - **60 lbs of K**
 - o Canola
 - **55 lbs of P**
 - **40 lbs of K**
- Zones were treated the same in 2017
 - o **42 lbs of P**
 - o **35 lbs of K**
- This created more P and K on the corn stubble side of the plots for 2017 when we look at total P and K applications over three years.
- This would be an indication of the importance of front loading P and K for soybean production.
 - o **Total P and K canola stubble over three years**
 - **145 lbs P, 110 lbs of K**
 - o **Total P and K corn stubble over three years**
 - **177 lbs of P, 130 lbs of K**
- This would be some of the factors that lead to higher yields of the same variety on corn stubble vs. canola stubble in the 2017 research plots
- Nitrogen was applied at recommended rates when canola/corn was grown but not in the 2015 or 2017 seasons on soybeans
- All fertility in any year was broadcast before planting
- **Active Build at herbicide, Active Flower at fungicide**

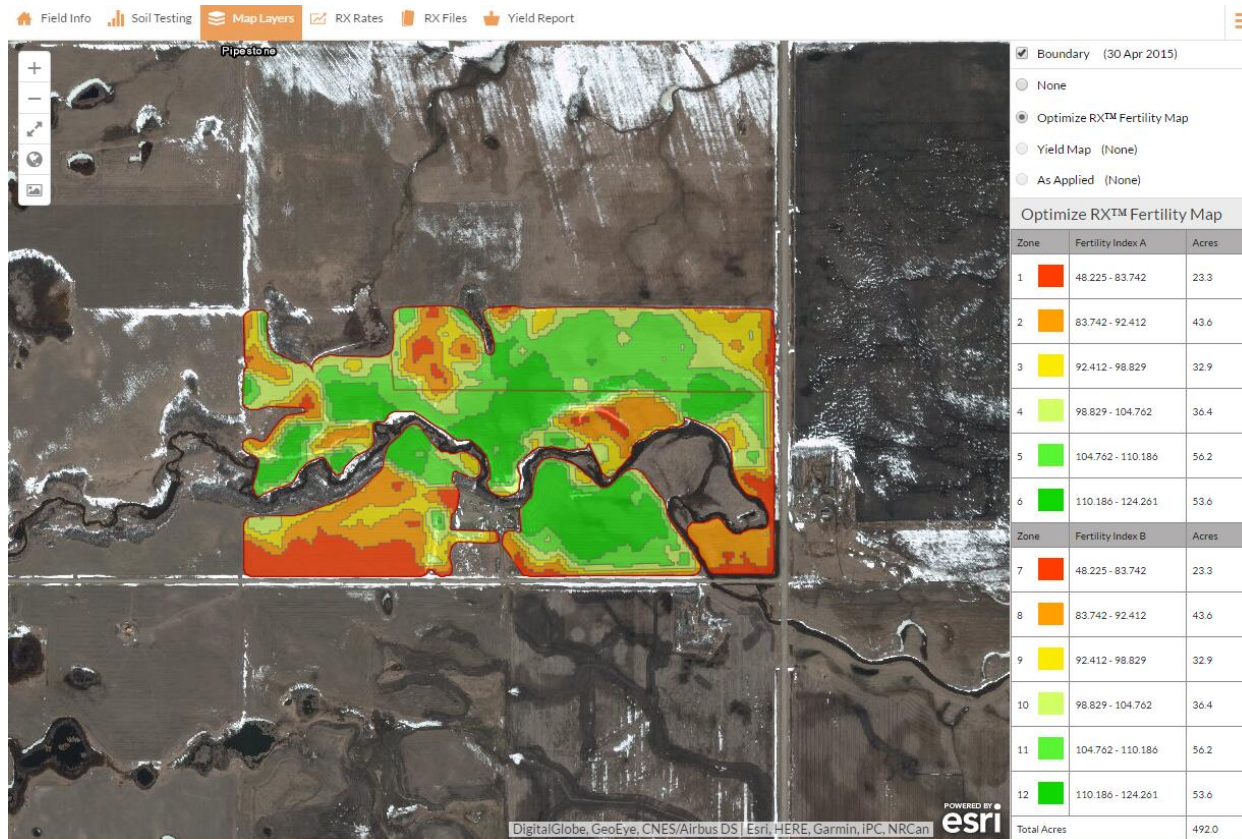


VIRDEN OIL CAPITALS JR A HOCKEY CLUB

900 5th Ave S, Box 398, Virden, MB R0M 2C0 ☐ Office: (204) 748-4848 ☐ Fax: (204) 748-4849

www.oilcapshockey.com

2017 Crop Club Soybean Yield Variety Results



VIRDEN OIL CAPITALS JR A HOCKEY CLUB

900 5th Ave S, Box 398, Virden, MB R0M 2C0 ☐ Office: (204) 748-4848 ☐ Fax: (204) 748-4849

www.oilcapshockey.com

2017 Crop Club Soybean Yield Variety Results



VIRIDEN OIL CAPITALS JR A HOCKEY CLUB
900 5th Ave S, Box 398, Virden, MB R0M 2C0 ☐ Office: (204) 748-4848 ☐ Fax: (204) 748-4849
www.oilcapshockey.com